



**Hawaii State Representative
Lauren Cheape Matsumoto**

Hawaii State Capitol, Room 303
415 South Beretania St.
Honolulu, HI 96813



RepMatsumoto@Capitol.Hawaii.gov



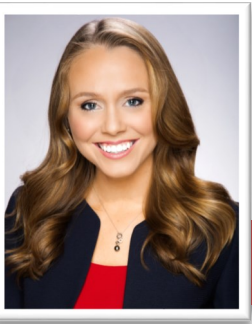
(808) 586-9490



RepMatsumoto.com

Informational Briefing on Rail

Please attend our informational briefing on the Rail on **April 16th, 2015 at Mililani Middle School Cafeteria at 7:00pm**. See the reverse side of this card for information about legislation and how it relates to the Honolulu Rail Project. *Send me your thoughts on the Rail Project at:*
RepMatsumoto@Capitol.Hawaii.gov.



LAUREN CHEAPE MATSUMOTO

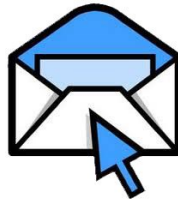
HAWAII HOUSE REPRESENTATIVE, DISTRICT 45

Honolulu Rail Project Community Input

My top priority is to communicate with you on the issues that affect you. **One of the hottest topics we are discussing in the 2015 Legislative Session is continuing the GET extension for the Honolulu Rail Project.** Like many of you, the Legislature has been frustrated by the Rail Project's delays and cost over-runs.

The City's options for closing the rail deficit are limited by their current taxing powers—they would need to increase property, gas, or one of the other taxes that the City is allowed to collect. Alternatively, **they could stop the project; however, that could incur penalties close to \$2 billion.**

Several measures relating to the GET surcharge extension are now being discussed in the State Legislature. **These measures would grant the City the option to continue the GET surcharge, keeping our GET rate at 4.5% or lowering it slightly to 4.25%.** Even if the State passes an extension, the decision to extend the GET surcharge will ultimately be made by the City Council.



To learn more, please attend our informational briefing on the Rail Project on **April 16th, 2015 at Mililani Middle School Cafeteria at 7:00pm** with HART representatives. *Before I make a final vote, please send me your thoughts at:* **RepMatsumoto@Capitol.Hawaii.gov**.