

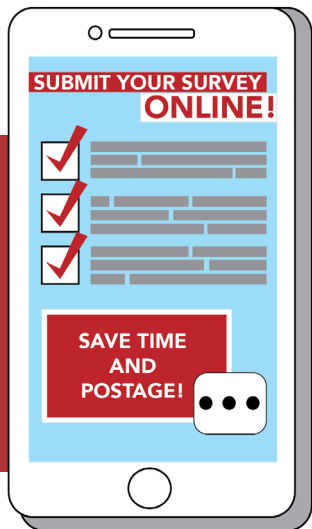
REP. LAUREN MATSUMOTO

HAWAII STATE HOUSE REPRESENTATIVE

Aloha Friends & Neighbors,

As we approach the middle of the 2020 Legislative Session, I want to hear from you! Your opinions on issues that will be voted on is important to me. To best represent your interests, I need your participation in completing and returning this survey. I look forward to hearing from you!

With Aloha,
Representative Lauren Matsumoto



COMPLETE THE
SURVEY ONLINE AT
REPMATSUMOTO.COM



2020 MID-SESSION COMMUNITY INPUT

1. Do you think the State should ban the sale of all flavored tobacco products? (HB 2457)
 Yes No
2. There is a shortage of mental health care professionals in the State. Do you think the State should allow **unlicensed** mental health professionals (supervised by a licensed mental health professional) to provide services to minors without parental consent or knowledge? (HB 2043)
 Yes No
3. Do you think the State should allow advanced practice registered nurses to prescribe life ending medication under the "Our Care, Our Choice" program? (SB 2582)
 Yes No
4. Do you think the State should create a new tax on carbon dioxide emissions? (SB 3150)
 Yes No
5. Should the State change the penalty for possession of less than two grams of illegal drugs (cocaine, heroin, meth, etc.) from a felony to a misdemeanor? (SB 2793)
 Yes No
6. Do you think the State should raise the income tax rate on individuals making more than \$100,000, heads of households making more than \$150,000, and families making more than \$200,000? (HB 2385)
 Yes No
7. Should 16 and 17 year olds be allowed to vote in local and State elections? (SB 4)
 Yes No
8. Do you think the State should prohibit foreign nationals and businesses from buying residential properties older than five years old? (SB 3110)
 Yes No
9. Do you think the State should require all Hawaii businesses (regardless of size) to provide 16 weeks of paid family leave? (SB 2491)
 Yes No
10. Do you think the minimum wage should be increased to \$13 per hour by January 1, 2023? (HB 2541)
 Yes No

- cut along dashed line -



HOW TO SEND US YOUR SURVEY RESPONSES:

- 1 Please complete each question on the survey by **Wednesday, April 15, 2020**. Visit **www.RepMatsumoto.com** and click on the 2020 Mid-Session Community Input Survey.
- 2 If you don't have internet access: cut, fold, tape closed, stamp and return the survey to my office.



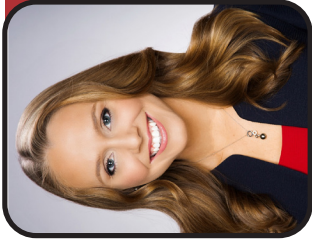
LEGISLATIVE SURVEY INFORMATION

Read more about each bill from this survey by visiting **www.RepMatsumoto.com** and by clicking on **2020 Mid-Session Community Input Survey Bill Info**.

You can also learn how to track legislation, submit testimony, and more on my new website!

Please complete the survey by **Wednesday, April 15, 2020**

LEARN MORE ABOUT THESE BILLS AND COMPLETE THE SURVEY
ONLINE AT **WWW.REPMATSUMOTO.COM**



HAWAII STATE REPRESENTATIVE
REPRESENTATIVE LAUREN MATSUMOTO

Hawaii State Capitol, Room 315
415 South Beretania Street
Honolulu, HI 96813

✉ RepMatsumoto@capitol.hawaii.gov
☎ (808) 586 - 9490
🌐 www.RepMatsumoto.com

SURVEY INSIDE



COMPLETE ONLINE TODAY!

I always strive to represent my constituents' concerns and interests and truly value your input and suggestions on issues before the House. In a representative government such as ours, it is essential that I know what you are thinking in order to do my job. Please fill out the survey online and make your voice heard! You may also mail your survey responses to my office. Mahalo!

- cut along dashed line -

PLACE
STAMP
HERE

- fold along dotted line -

- Tape or staple here -

Representative Lauren Matsumoto
Hawaii State Capitol, Room 315
415 South Beretania Street
Honolulu, HI 96813

- Tape or staple here -